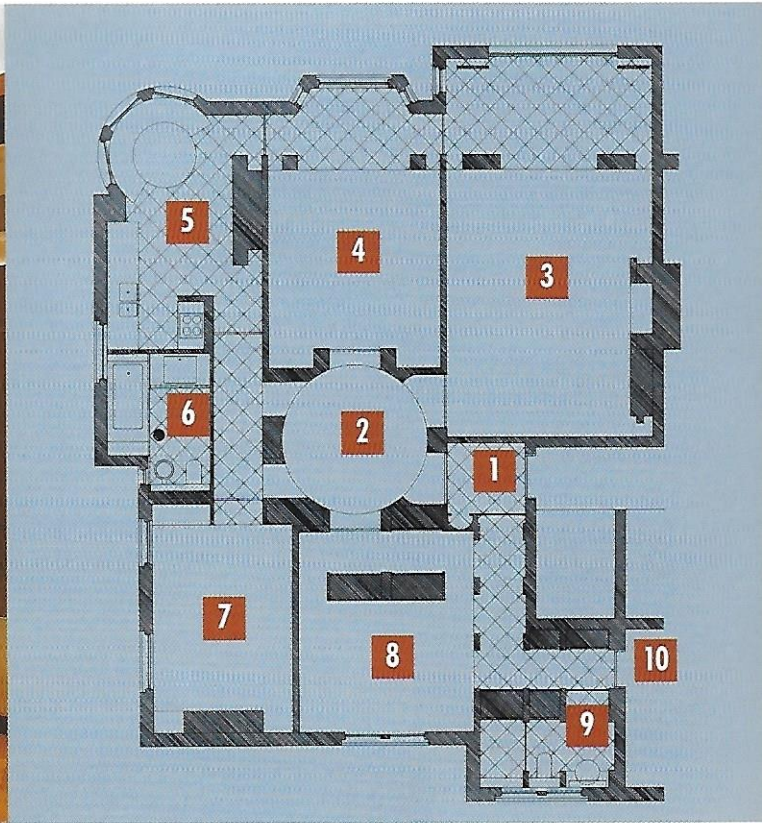


# edgecliff apartment

- 1 Entry
- 2 Rotunda
- 3 Living Room
- 4 Dining Room
- 5 Kitchen
- 6 Bathroom/Laundry
- 7 Guest Bedroom/Study
- 8 Main Bedroom
- 9 Ensuite to Main Bedroom
- 10 Service Stair



**Architect: Greg Anderson**

A familiar and loved location led to the purchase of this 'strata' volume on the fourth floor of a six level 1920's apartment building. Aspect, views, security and two apartments per floor assisted with the selection of what is now a two bedroom urban apartment designed for a couple as their Sydney residence.

**Photographer: Sharrin Rees**





'Sun and views from the north-eastern corner bay window of the existing secondary bedroom initiated both the reassessment of room functions, then the manipulation of the spaces.

'My clients were accustomed to an eat-in kitchen so this room became just that with the banquette seating taking up the prime corner position.

'The relocation of the kitchen from the south-west to the north-east set in place a chain of reassessments. The existing main bedroom became the dining room - adjacent to and between the kitchen and the living rooms. A verandah - always intended to be enclosed at the end of the living room - could now generate a colonnade from the living room aligning itself with the external window wall past the dining room and embracing the kitchen - finishing in the back hall. This notionally provided the outdoor space to the apartment and suggested the use of a tiled floor and generated a promenade.

'The bedrooms and bathrooms could now take up the private side of the apartment with the main bedroom taking the position of the former dining room and the second bedroom and study was created from a laundry and mini third bedroom.

'A further repetitive element, another colonnade, starts from the entrance vestibule moving alongside the main bedroom and either to the ensuite for this bedroom past robes or to the secondary stair of the apartment block. This mirrored colonnade has given more space to the main bedroom. So a raised ensuite to bedroom one takes up the position of the former kitchen.

'The banquette seating and round table within a rounded north-eastern end to what has become the kitchen suggested with the aid of symmetry and an axial manipulation the all-important rotunda.

'With the opportunity of six openings leading to and from a central space this invitation to establish this continuously traversable space could not be missed. The rotunda with its deep entries of walnut panelling became the focus for the apartment. The dome above reinforced this and alluded to a greater than three metre ceiling height. Ceiling heights and ceiling panels have been adjusted and established to blur the true reading of room heights.

'Panelling throughout, whether walnut or Tamo beech, conceals storage, audio-visual equipment, fire units and in the case of the bedroom study a queen sized bed. Within the main bedroom a timber box provides a backdrop to the bed with side units, a storage cupboard for clothing and additional concealment of the bedroom at the termination of an axis that starts at the dining room bay window.

'Concealment and surprise have played their part within the design for this apartment. At the main entrance timber panelling beside the gold leaf semi-circular slot conceals the entry to the colonnade leading to the main bedroom. The doors to both bathrooms are read either as part of the panelling wall or as another cupboard entry door. Concealment is taken even further within the main bathroom. This room functions as a guest toilet and basin yet is capable of opening out to reveal a laundry and a large shower bath as required. The isolated, tiled round column conceals two pipes that pass through the apartment.

'Brass doors with a bronze patina and clear or laminated glass further enrich and segregate the spaces.

'George Freedman Associates accepted our invitation to consult on this project. They offered advice on materials and finishes, and designed and selected specific furniture items. Malcolm Utley and Patricia Chow provided architectural assistance within my office.'

**Greg Anderson**



