

Interior Design

Offices, London

designers: Tandy, Halford and Mills

consultant architect: Ronald Cuddon
job designer: George Freedman

photographs by H. de Burgh Galwey

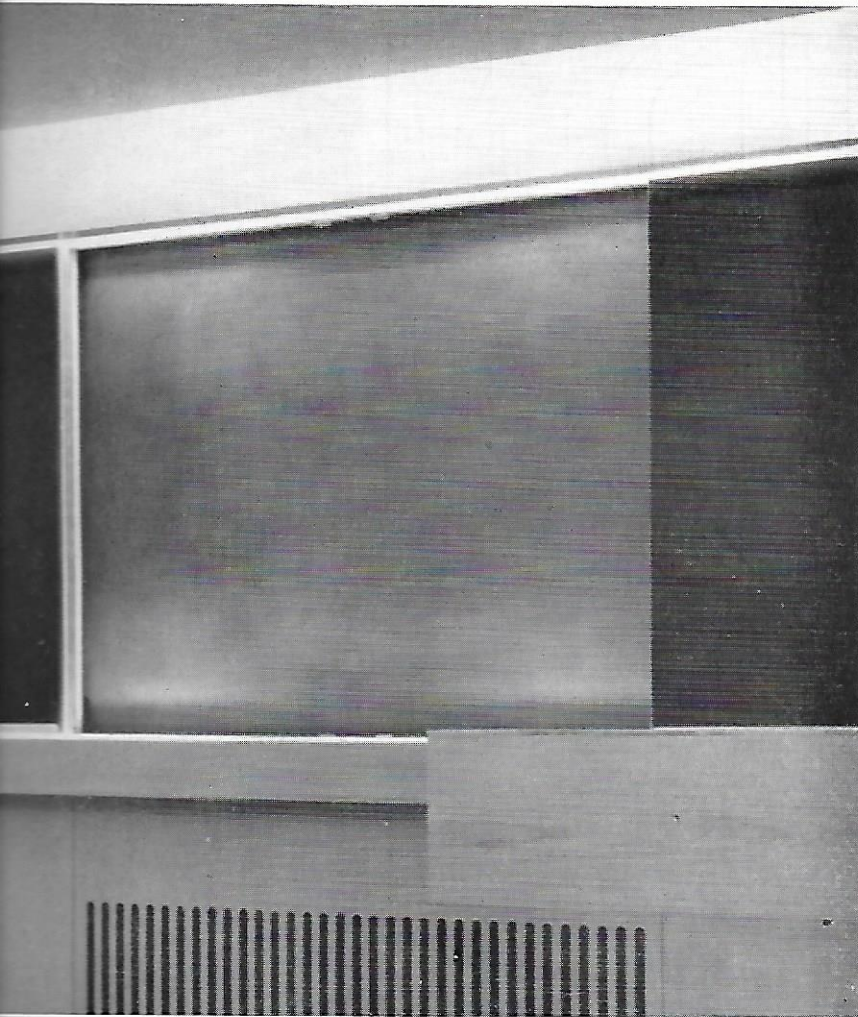
The assignment was to convert some 7,000 sq. ft. on one floor of an office building on the fringe of London, built about forty years ago, into an up-to-date prestige suite of directors' offices for an international company. The existing building contained air-conditioning and double glazing in most areas. A small cinema and projection room was also part of the complex. All the walls were panelled with timber, and the entire area was covered with a mushroom coloured carpet.

THM'S brief called for planning which placed the directors on one side of the building and the secretaries in open planned offices. The cinema and projection room had to be located so that members of the staff other than the directors would have easy access to it. Other requirements were the adaptation of the existing air-conditioning, the installation of double glazing everywhere and the provision of under-floor ducts for all wiring. The chairman's office was extended to include a garden room and the garden was re-planned and landscaped. It was also agreed to put coats, files, refrigerators, tapes, etc., into built-in fittings.

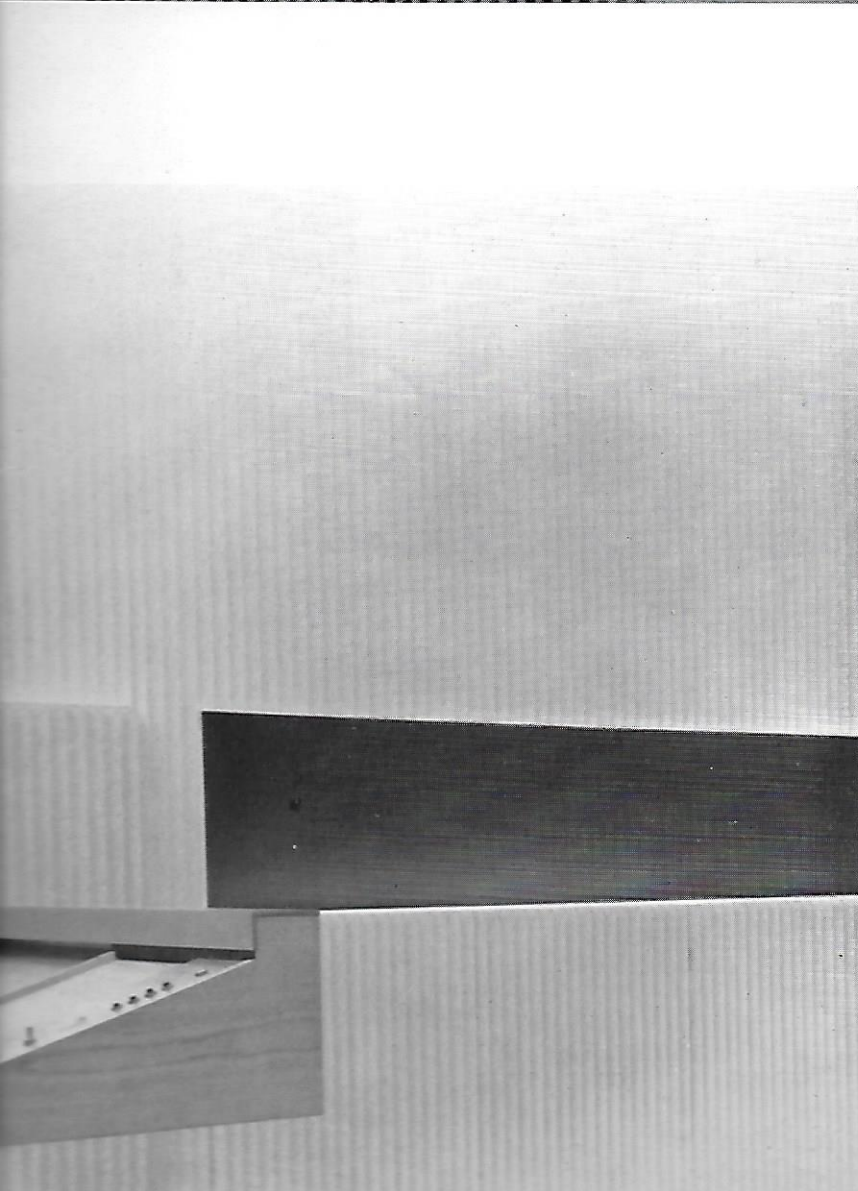
The area divided itself into three parts: east side for the directorate offices, the middle area for the service areas, reception and cinema and the west side for other top level staff and their secretaries. All areas are treated similarly, with plaster fins placed between windows; doors, skirtings and windows detailed in a like manner; all windows provided with venetian blinds and curtained. The carpet everywhere, except in the cinema, has narrow stripes of gold and light gold. Lighting consultant: Derek Phillips. Air conditioning consultant: R. H. Husband and Partners.

1. reception area. Desk, blockboard faced with ash veneer. Mural in background, of white fibrous plaster, designed by George Freedman.



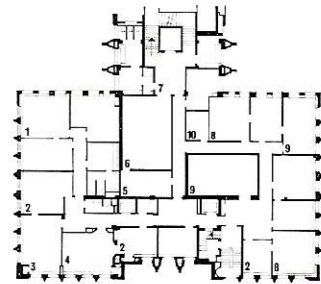


2 and 3, cinema. 2, screen wall. The whole screen unit is recessed and ash veneered. Outside panels fold back and are covered in green felt for use as pinning surfaces. Blackboard, acid-etched plastic laminate. 3, view from screen wall showing open display case. Left, lectern which contains intercom, microphone, earphones and lighting controls. 4, 5 and 6 (opposite). 4, filing cabinet (ash veneered) in secretaries' office. Ceiling of alternate fibrous plaster troughs and white plastic egg-crate diffusers. 5, view from office into garden room. White-painted timber folding doors separate the two rooms. Floor, Sicilian marble. 6, secretaries' office. Walls are white-painted plaster, carpet yellow and gold stripes.

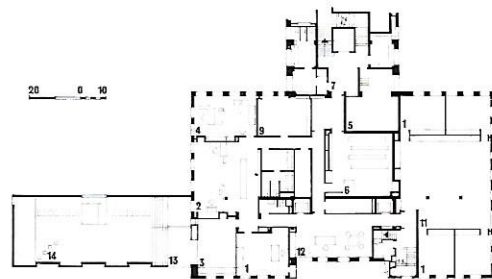


key

- 1, director
- 2, secretary
- 3, chairman
- 4, vice-chairman
- 5, projection room
- 6, viewing room
- 7, lobby
- 8, general office
- 9, conference room
- 10, store
- 11, open office
- 12, reception area
- 13, garden room
- 14, garden



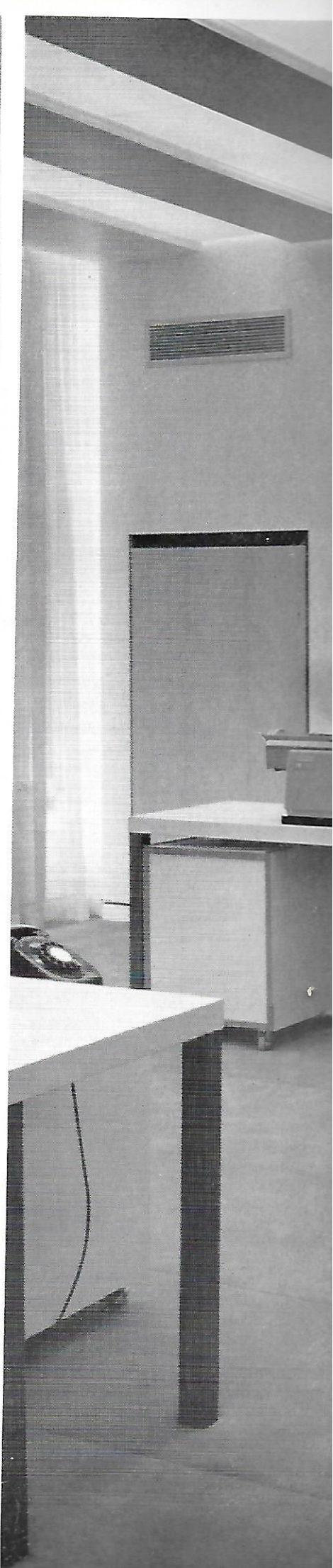
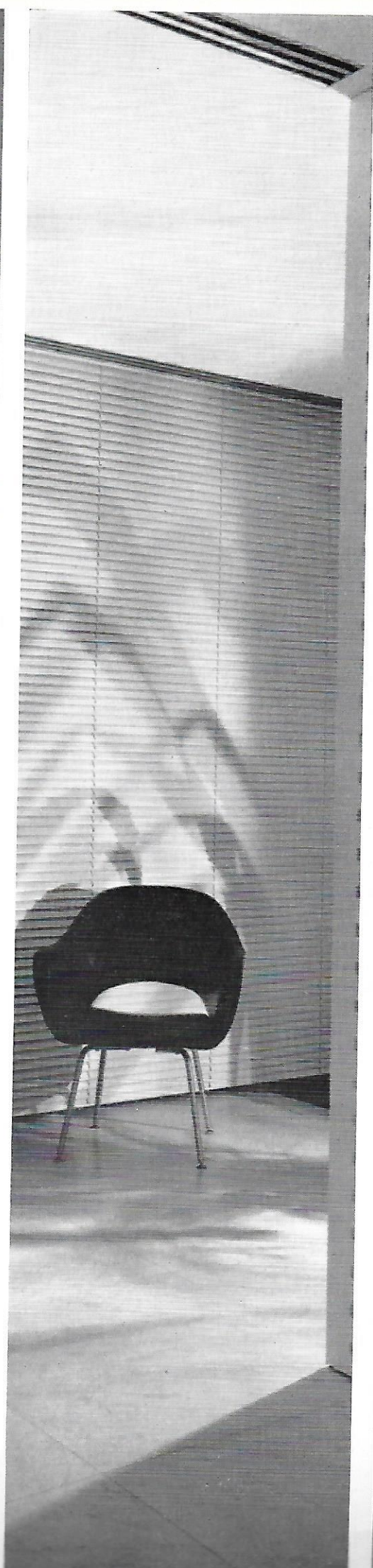
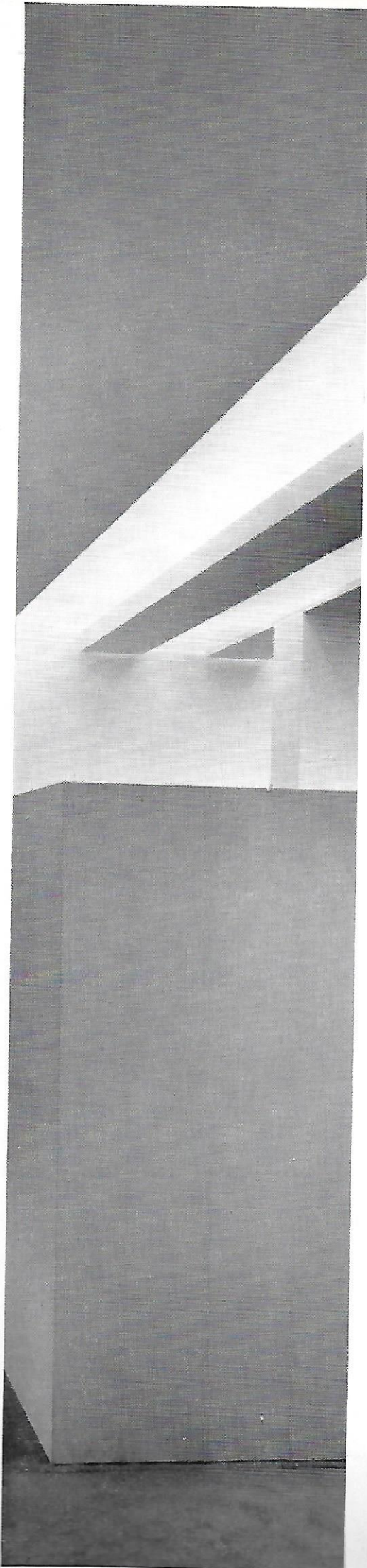
plan: before conversion



plan: after conversion

Offices, London

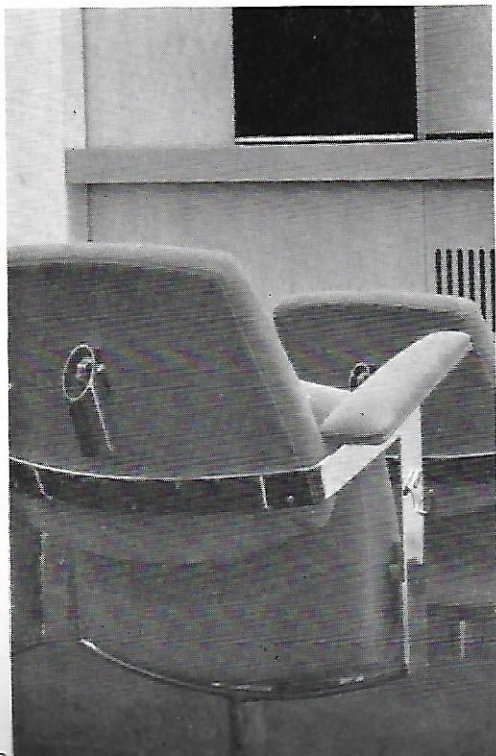






7

7. reception area. Sliding doors beyond desk are faced with Rio rosewood. Chairs and marble-topped table by Jacobsen.



8, detail, seating in cinema. Metal-work, bright chrome.

Offices, London

