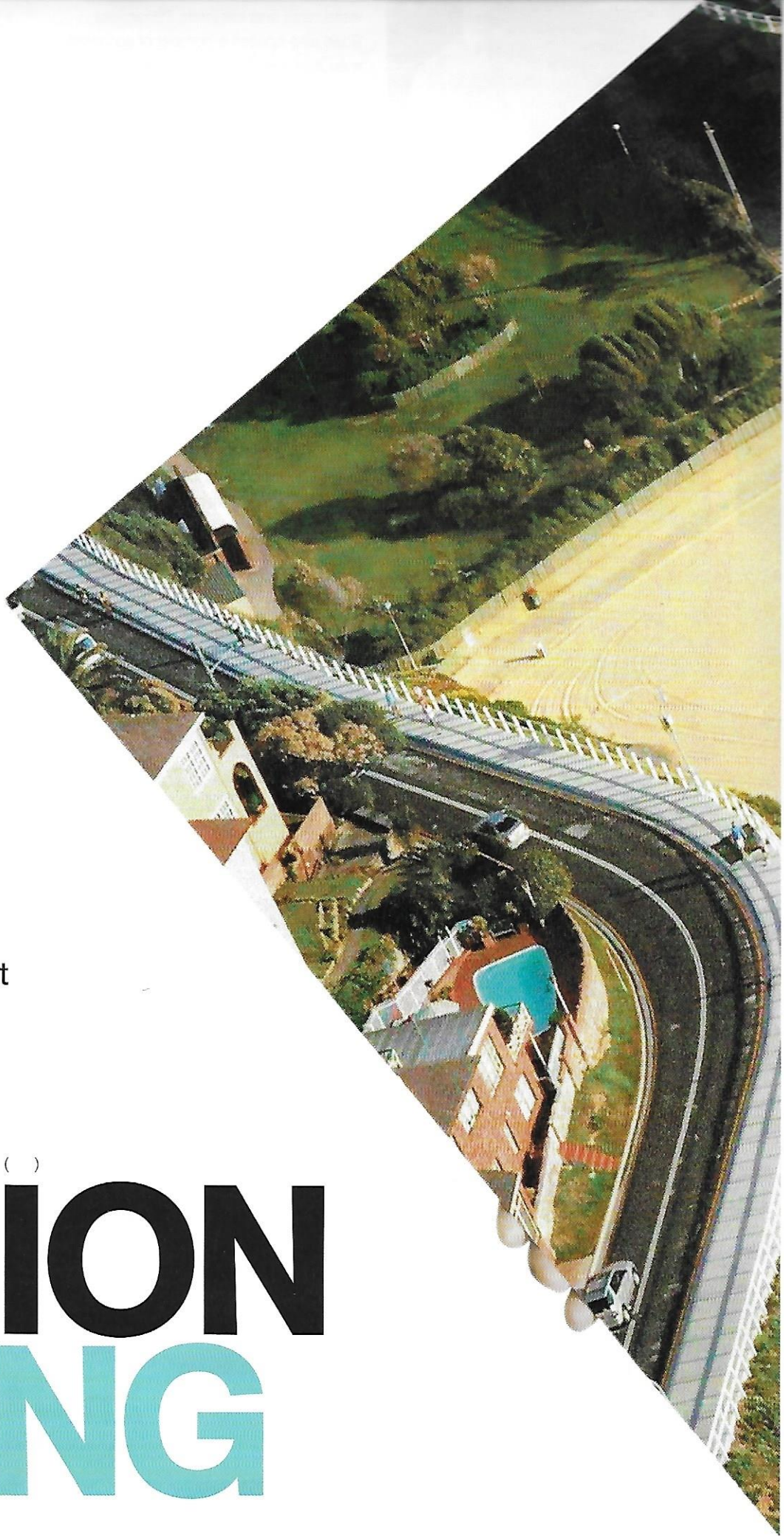
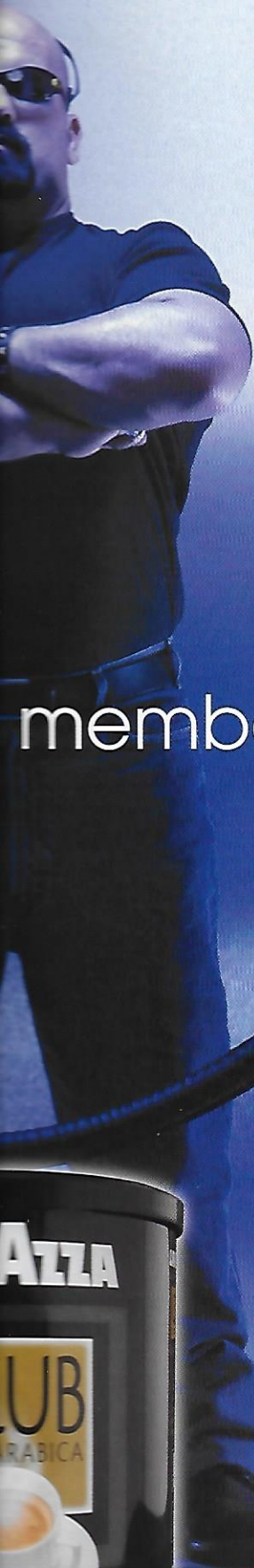


What happens when you ask Sydney's leading creative talent to depict their city? Here a graphic designer, artist, chef, interior designer, photographer and florist show how Sydney inspires them. As [Bonnie Malkin](#) discovered, the responses were as varied as footprints in the sand, a bemused baby in the chaotic CBD and a canvas showing not only paint but melted plastic.

THE VISION THING

Portrait photography Stephen Baccon Aerial photography Peter Rae Food photography Jennifer Soo





member?



George Freedman, Interior designer

"This space was conceived and executed 11 years ago and it's as fresh today and as pertinent now as it was then. This room physically extends out into the view – that's the way we live in Sydney; inside, outside – into the conceptual space that is country and city. The idea was to create a sophisticated, comfortable room using the ancient Roman concept 'Rus in Urbe', of bringing the country into the city and using the window as a proscenium for the lush green view, while providing total privacy. The floor is limestone, a natural material which gives an attachment to the earth and the feeling of being part of the ground. Using limestone was a tongue-in-cheek quotation on Sydney sandstone.

"This is a totally international room in terms of the materials and the colours we used and all the individual elements come from many parts of the world. The sofa was manufactured in the US, by [designer Florence] Knoll, as well as the stool, which had been designed by [German architect/designer Ludwig] Mies van der Rohe in 1929 for the German pavilion at the International Exhibition in Barcelona, Spain.

"The sofa is a classic, designed by Knoll in 1954. It is a part of the international concept of modernist furniture. The light beech coffee

table had been designed by Gianfranco Frattini in 1974 for Knoll, which is sadly no longer in production.

"Sydney strives for an international identity, it wants to be an international city and has become one. Many who live here are involved in the great quest for travel. Australians have always travelled far and wide and now, with advances in technology, the world is on our doorsteps and at our finger tips.

"The colour scheme is black, red and beige. We liked these colours because they are handsome, classic and timeless and they are also a quotation on the colours used by Mies van der Rohe in his 1929 Barcelona pavilion."

New York-born George Freedman, pictured above right with Ralph Rembel, worked with Kahn & Jacobs Architects in New York until 1960, when he moved to Sydney. The award-winning designer is a founding member of the Australian Academy of Design and director of Freedman Rembel with architect Ralph Rembel. Freedman Rembel has created interiors for Government House, the QVB and the State Bank of NSW and has had many residential commissions.